

ARL Series

Features

- 10A switching capability (2C,3C,4C type),
- 1.5KV dielectric strength (between coil and contacts)
- Coil voltage:6~380V AC,6~220VDC
- Mounting type: socket, PCB, flange-mounting



► CONTACT DATA

Contact arrangement	1C	2C	3C	4C
Contact Resistance	50m Ω (1A 24 VDC)			
Contact material	AgCdO			
Contact rating(Res.load)	15A 28VDC 15A 240VAC	10A 28VDC 10A 240VAC	10A 28VDC 10A 240VAC	10A 28VDC 10A 240VAC
Max.switching power	3600VA/420W	2400VA/280W	2400VA/280W	2400VA/280W
Max.switching voltage	30VDC/286VAC			
Max.switching current	15A	10A	10A	10A
Mechanical endurance	1 \times 10 ⁷ OPS			
Electrical endurance	1 \times 10 ⁵ OPS			

► CHARACTERISTICS

Insulation resistance	500M Ω (500VDC)	
Dielectric strenght	Between coil & contacts	1500VAC 1 min
	Between open contacts	1000VAC 1min
Operate time(at nomi.volt)	25ms max.	
Release time(at nomi.volt)	25ms max.	
Shock resistance	Functional	98m/s ²
	Destructive	980m/s ²
Vibration resistance	10Hz ~55Hz 1.5mm DA	
Humidity	98% RH,40 $^{\circ}$ C	
Ambient temperature	-40 $^{\circ}$ C ~70 $^{\circ}$ C	
Termination	PCB、 Plug	
Unit weight	1C/2C:Approx.33g 3C:Approx.48g 4C:Approx.15g	
Construction	Dust protected	

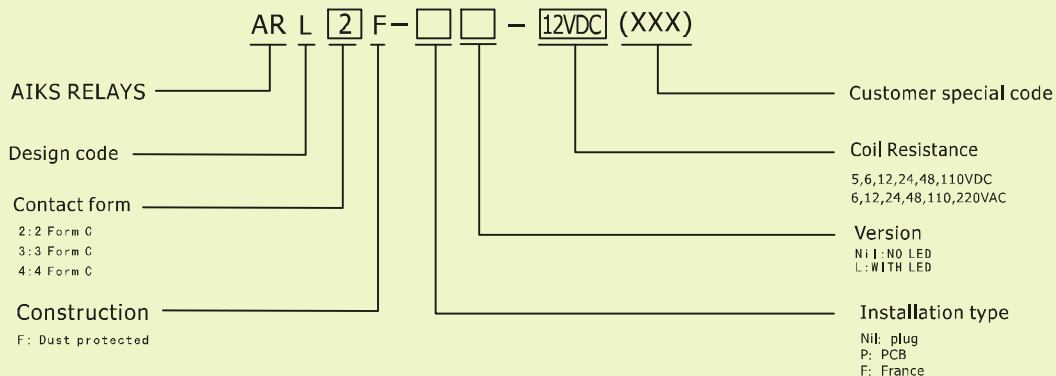
► COIL DATA

Coil power	1C/2C(VDC: Approx.0.9W; VAC: Approx.1.2VA) 3C(VDC: Approx.1.4W; VAC: Approx.2VA) 4C(VDC: Approx.1.6W; VAC: Approx.2.5VA)
------------	---

Nominal Voltage VDC	Pick-up Voltage VDC	Drop-out Voltage VDC	Max.Allowable Voltage VDC at 85°C	Coil Resistance Ω
5	4.0	0.50	5.5	1C/2C:27.5 3C:18.0 4C:16.0
6	4.8	0.60	6.6	1C/2C:40 3C:25.7 4C:16.0
12	9.6	1.20	13.2	1C/2C:160 3C:102.8 4C:16.0
24	19.2	2.40	26.4	1C/2C:650 3C:411.4 4C:16.0
48	38.4	4.80	52.8	1C/2C:2600 3C:1650 4C:16.0
110	88.0	11.0	121	1C/2C:11000 3C:8650 4C:16.0

Nominal Voltage VDC	Pick-up Voltage VDC	Drop-out Voltage VDC	Max.Allowable Voltage VDC at 85°C	Coil Resistance Ω
6	4.80	1.80	6.6	1C/2C:11.5 3C:7.2 4C:5.7
12	9.60	3.60	13.2	1C/2C:46 3C:28.8 4C:23
24	19.2	7.20	26.4	1C/2C:184 3C:115.2 4C:95
48	38.4	14.4	52.8	1C/2C:735 3C:460 4C:370
110	96.0	36.0	132	1C/2C:4550 3C:2420 4C:1950
220	176.0	72.0	264	1C/2C:14400 3C:9680 4C:7750

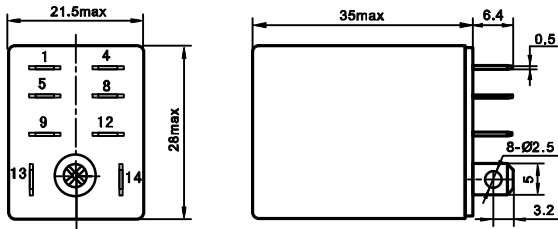
► MODEL DESCRIPTION



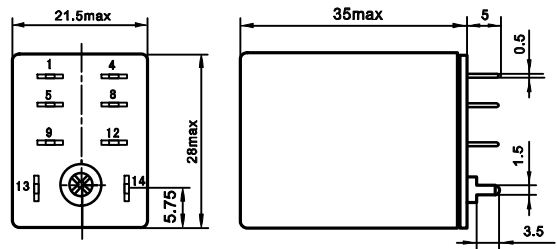
▶ OUTLINE DIMENSIONS, WIRING DIAGRAM AND PC BOARD LAYOUT Unit: mm

Outline Dimensions

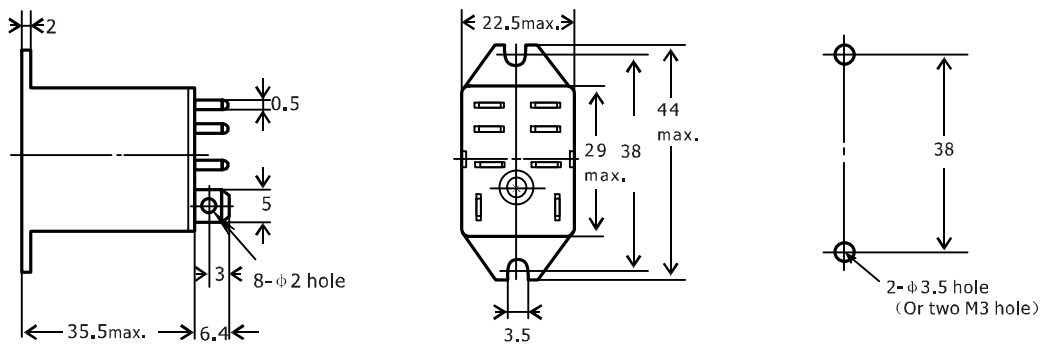
ARL1/2F-□□



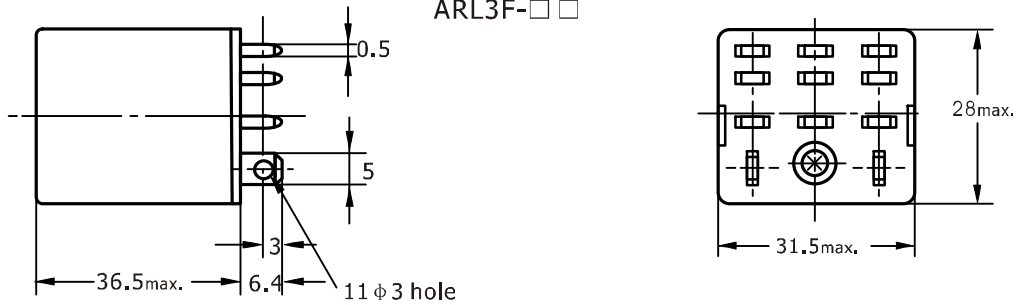
ARL1/2F-P□



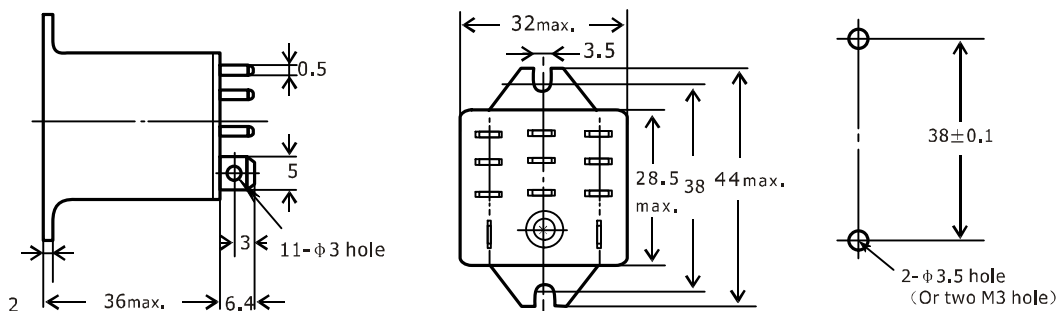
ARL1/2F-F□



ARL3F-□□



ARL3F-F□

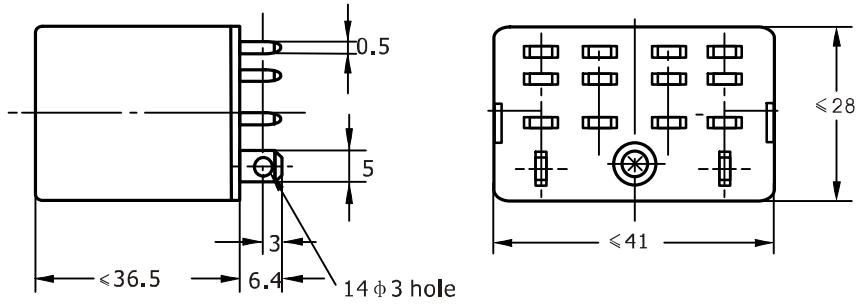


Remark: 1) In case of no tolerance shown in outline dimension: outline dimension ≤ 1 mm, tolerance should be ± 0.2 mm; outline dimension > 1 mm and ≤ 5 mm, tolerance should be ± 0.3 mm; outline dimension > 5 mm, tolerance should be ± 0.4 mm
2) The tolerance without indicating for PCB layout is always ± 0.1 mm.

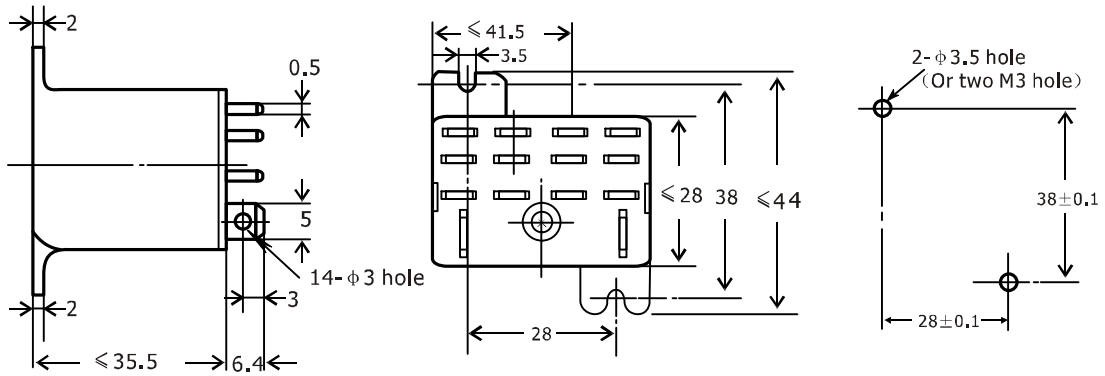
▶ **OUTLINE DIMENSIONS, WIRING DIAGRAM AND PC BOARD LAYOUT** Unit: mm

Outline Dimensions

ARL4F-□□

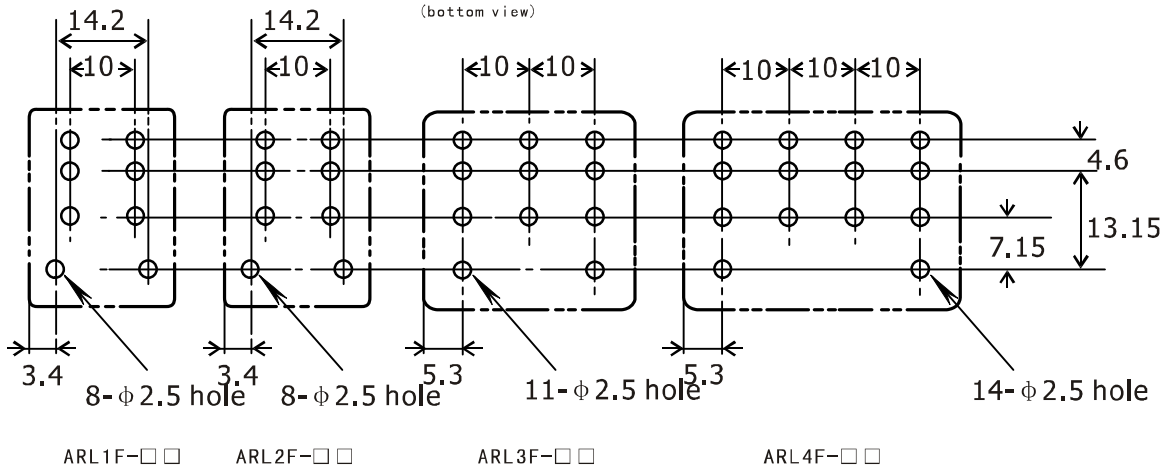


ARL4F-F□



Installing hole size

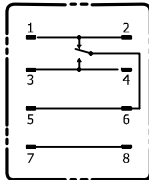
(bottom view)



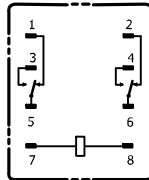
▶ **OUTLINE DIMENSIONS, WIRING DIAGRAM AND PC BOARD LAYOUT** Unit: mm

Wiring Diagram (bottom view)

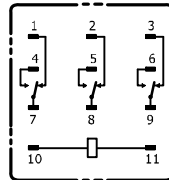
ARL1F-□□



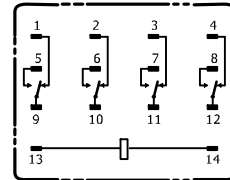
ARL2F-□□



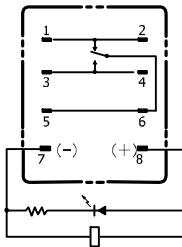
ARL3F-□□



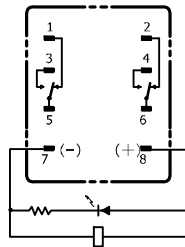
ARL4F-□□



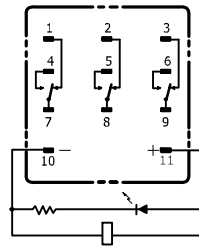
ARL1F-L□
(With LED)



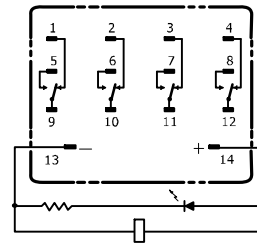
ARL2F-L□
(With LED)



ARL3F-L□
(With LED)



ARL4F-L□
(With LED)



▶ **Characteridtic curves**

